

# BBC Media Village, White City, London



BBC Media Village adjoins the BBC's existing buildings at Wood Lane in London. Designed with a continental atmosphere in mind, the development focuses on open plan areas both inside and out and aims to promote a relaxed, 'meet and greet' culture for the Corporation's employees.

Marshalls' objective was to complement the modern interior environment of the buildings with external landscaping of an equally high quality, thereby creating a calm and relaxing outdoor area where employees could gather.

Over 2,000 m<sup>2</sup> of La Linia Paving from the new Marshalls' Stein+Design range has been supplied for the construction of external walkways and areas of hard landscaping in eight 'zones' surrounding the new buildings as well as the existing Television Centre. This is complemented by 1,000 m of Conservation Kerb.

The textured finish of the La Linia Light Granite Paving exposes coloured, high quality aggregates which enhance the quality of the paving; the wide variety of paver modules available means that striking patterns can be created. The finished work provides a suitably continental aesthetic for the Media Village and a high quality exterior environment to match the standing of an international organisation such as the BBC.

#### Products Used:

- Stein+Design – La Linia
- Conservation Kerb

#### Specialist involved:

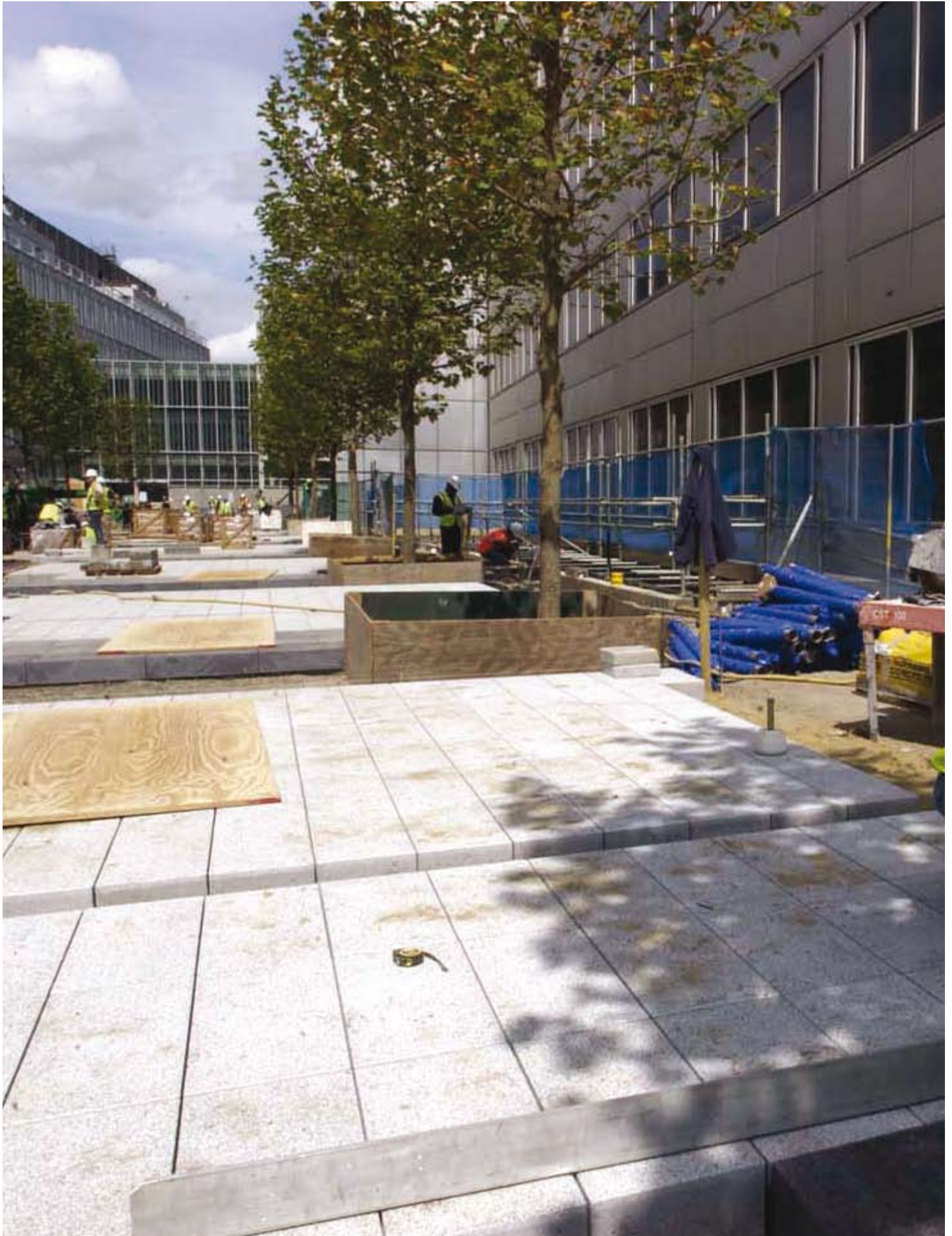


## Marshalls

Transforming Britain's Landscapes



BBC Media Village, White City, London



BBC Media Village, White City, London



BBC Media Village, White City, London