



# Marshalls

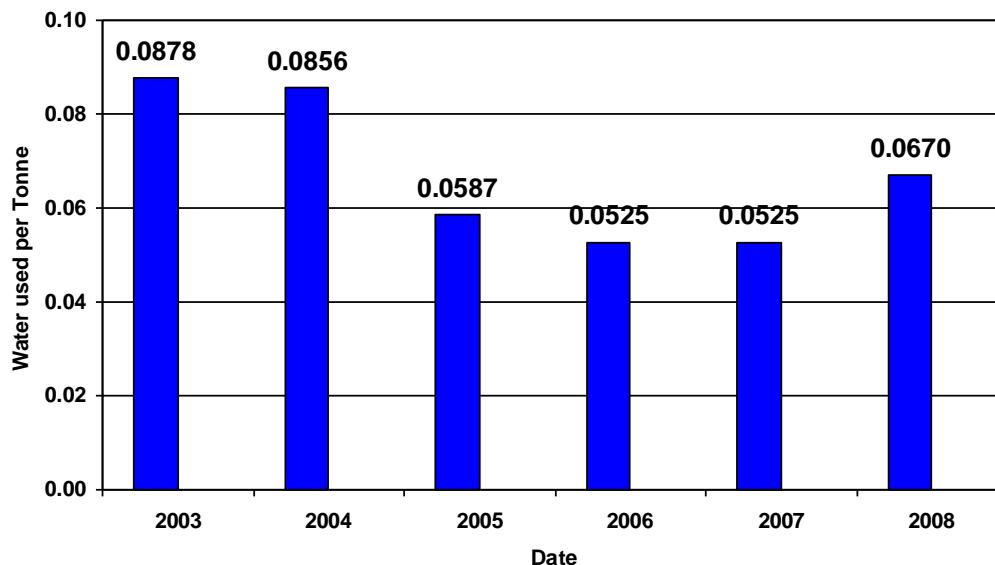
Transforming Britain's Landscapes

## Water

Marshalls has continued to invest in water recycling to reduce its dependence on mains and borehole water supplies, with investment at two further sites during 2008. The company remains committed to improving the balance between recycled and externally supplied water at its main production sites.

***During 2008, use of treated water from mains sources declined by 14.9% overall.***

Water used per Tonne of Production Output



Marshalls' overall target for water use is 0.05m<sup>3</sup> per tonne of production of water from mains or boreholes by 2015.

Marshalls recognises that this target can only be achieved by harvesting and recycling, and the company continues to invest in product innovation, in order to help the Government achieve its Future Water targets and to provide permeable paving and driveway solutions to consumers following recent legislation on paving over front gardens.