

Utility Paving

Budget no-nonsense paving ideal for utility areas



11-13kg CO₂ per m²



Utility Paving, Pendle, Buff (B)



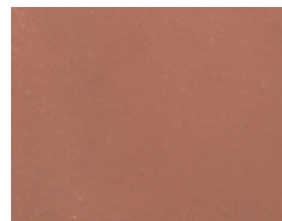
Utility Paving, Richmond, Red (R)

Utility Paving

- Not recommended for decorative patio areas
- Can be laid on a mortar bed with joints of 8-10mm, pointed with mortar
- Units 450 x 450 or smaller can be laid on screeded sand with joints of 2-5mm filled with jointing sand
- On no account should it be laid butt jointed
- Being a 'budget' product, colours and face finishes will vary and there is limited protection when in transit, so the surface may bear scratch marks
- Utility Paving is manufactured at our regional factories for distribution within local areas, so pavings from different factories should not be mixed on site
- As with all concrete products, Utility Paving may temporarily suffer from efflorescence early in its life (see p.170)

Paving	Sizes mm (nominal)	No./m ² *	Weight (kg/each)	Weight (kg/pack)	No./pack	Colours	kg CO ₂ per m ²
Richmond	450 x 450 x 32	4.7	14.5	870	60	N, R, B	11
	600 x 600 x 38	2.7	32	800	25	N, B	13
Pendle	450 x 450 x 32	4.7	15	900	60	N, R, B	11
	600 x 600 x 38	2.7	32	800	25	N, B	13

*Assumes nominal 10mm joint width



Richmond, Red (R)



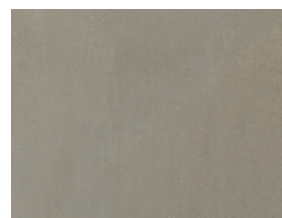
Pendle, Red (R)



Richmond, Buff (B)



Pendle, Buff (B)



Richmond, Natural (N)



Pendle, Natural (N)